

# Xkyte OMS



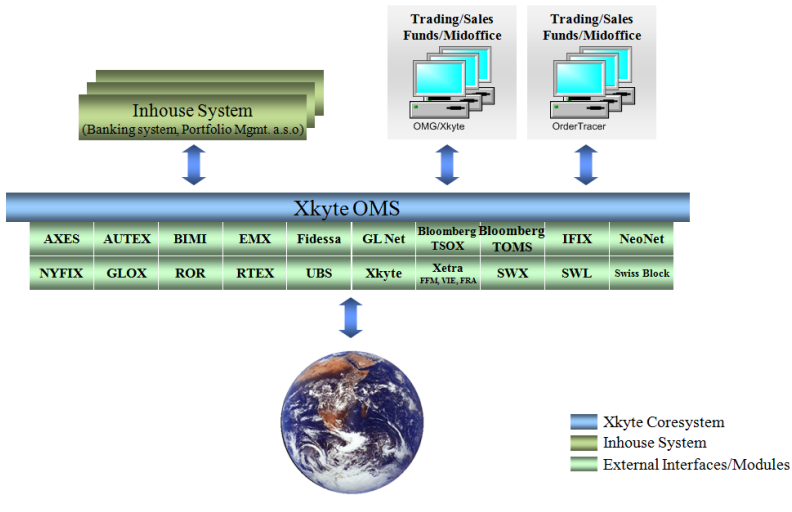
## Portrait

In 1994 **OARIS** started with the development of qualitative high-standing software for the financial sector. Thanks to long lasting experience from the financial industry among our employees **OARIS** was from the beginning significantly involved in the Project “Elektronische Börse Schweiz (EBS)” – “Electronic Stock Market Switzerland” with implementations and connections in particular banks. In 1996 the first bank started with the **OARIS** Order Routing System (ORS) at the Swiss Stock Exchange SWX. Today a multiplicity of banks is using products from **OARIS**.

**OARIS** is offering software solutions for banks in the area of security transactions. The array of products goes from the simple parametrizable FIX Order Routing solution **Xkyte FIXBox**, over the high-performance trading system **Xkyte Trading**, the user-supported fund routing system **Xkyte Fund** to the flexible **Xkyte** Order Management System **Xkyte OMS**. The OARIS modular technique enables shortly implementation of customer-requested solutions.



**Xkyte OMS** permits the connection of most of the different systems by using individual APIs or FIX. **Xkyte OMS** enables the transfer of shares, options, bonds, EFTs and funds. The intelligent rules engine controls the transaction process. Data from third party systems can easily be integrated through open interfaces. Real time data from financial information systems identify risks and deliver high market transparency. In **Xkyte OMS** every transaction and its respective modifications are traceable over years at any time thanks to a journaling function.

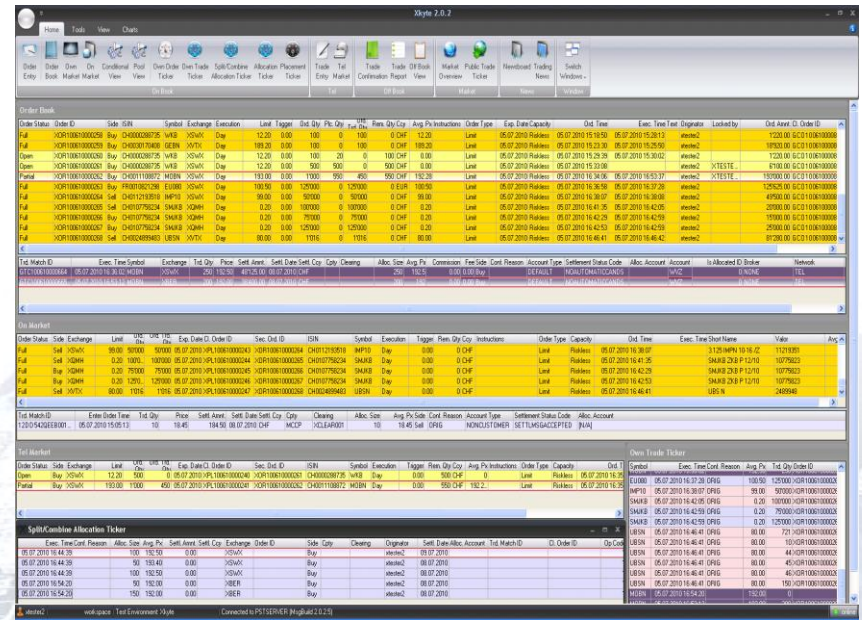


**Xkyte OMS** is applicable in branches worldwide and centrally accessible. Various branch systems can be connected. The parameterization permits the set up of individual brokers inside of OMS. Thereby it is possible to use the regional advantages completely.

The system runs 7 x 24 hours. The GUIs are applicable without time zone dependency.

The distribution of all transactions is electronically adherent and possible to historicize in **Xkyte OMS**.

Rules in all areas can be set with the comfortable rules engine. The system recognizes the placement and release rules, delete rules, trade rules and expiry rules. With all these rules a maximal degree of automation can be reached with **Xkyte OMS**. Therefore, a manual action is only necessary in exceptional cases or required situations.



The graphical interface is completely individually configurable. There is paid greater attention to the access security. Thereby it is possible to distribute the same GUI individually to all authorized person groups (Trading, Mid-office, Risk, IT, etc).